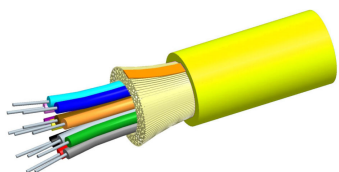


Fiber indoor cable, TeraSPEED® Riser Distribution, Singlemode G.652.D and G.657.A1, 12 fiber single-unit, Feet jacket marking, Yellow jacket color



## Product Classification

### Regional Availability

Asia | Australia/New Zealand | Latin America | Middle East/Africa | North America

### Portfolio

CommScope®

### Product Type

Fiber indoor cable

### Product Series

R-DS

## General Specifications

### Cable Type

Distribution

### Construction Type

Non-armored

### Fiber Type, quantity

12

### Jacket Color

Yellow

### Jacket Marking

Feet

### Subunit Type

Gel-free

### Total Fiber Count

12

## Dimensions

### Diameter Over Jacket

5.95 mm | 0.234 in

## Representative Image



## Mechanical Specifications

<b>Minimum Bend Radius, loaded</b>	89 mm   3.504 in
<b>Minimum Bend Radius, unloaded</b>	59 mm   2.323 in
<b>Tensile Load, long term, maximum</b>	200 N   44.962 lbf
<b>Tensile Load, short term, maximum</b>	667 N   149.948 lbf
<b>Compression</b>	10 N/mm   57.101 lb/in
<b>Compression Test Method</b>	FOTP-41   IEC 60794-1 E3
<b>Flex</b>	100 cycles
<b>Flex Test Method</b>	FOTP-104   IEC 60794-1 E6
<b>Impact</b>	5.88 N-m   52.042 in lb
<b>Impact Test Method</b>	FOTP-25   IEC 60794-1 E4
<b>Strain</b>	See long and short term tensile loads
<b>Strain Test Method</b>	FOTP-33   IEC 60794-1 E1
<b>Twist</b>	10 cycles
<b>Twist Test Method</b>	FOTP-85   IEC 60794-1 E7
<b>Vertical Rise, maximum</b>	500 m   1,640.42 ft

## Optical Specifications

<b>Fiber Type</b>	G.652.D and G.657.A1 , TeraSPEED®   G.652.D and G.657.A1, TeraSPEED®
-------------------	--

## Environmental Specifications

# 760004440 | R-012-DS-8W-FSUYL

<b>Installation temperature</b>	-20 °C to +70 °C (-4 °F to +158 °F)
<b>Operating Temperature</b>	-20 °C to +70 °C (-4 °F to +158 °F)
<b>Storage Temperature</b>	-40 °C to +70 °C (-40 °F to +158 °F)
<b>Cable Qualification Standards</b>	ANSI/ICEA S-83-596   Telcordia GR-409
<b>Environmental Space</b>	Riser
<b>Flame Test Listing</b>	NEC OFNR (ETL) and c(ETL)
<b>Flame Test Method</b>	UL 1666

## Environmental Test Specifications

<b>Heat Age</b>	-20 °C to +85 °C (-4 °F to +185 °F)
<b>Heat Age Test Method</b>	IEC 60794-1 F9
<b>Low High Bend</b>	-20 °C to +70 °C (-4 °F to +158 °F)
<b>Low High Bend Test Method</b>	FOTP-37   IEC 60794-1 E11
<b>Temperature Cycle</b>	-20 °C to +70 °C (-4 °F to +158 °F)
<b>Temperature Cycle Test Method</b>	FOTP-3   IEC 60794-1 F1

## Packaging and Weights

<b>Cable weight</b>	32 kg/km   21.503 lb/kft
---------------------	--------------------------

## Regulatory Compliance/Certifications

<b>Agency</b>	<b>Classification</b>
CHINA-ROHS	Below maximum concentration value
ISO 9001:2015	Designed, manufactured and/or distributed under this quality management system
REACH-SVHC	Compliant as per SVHC revision on <a href="http://www.commscope.com/ProductCompliance">www.commscope.com/ProductCompliance</a>
ROHS	Compliant



## Included Products

CS-8W-TB – TeraSPEED® Singlemode Fiber

## \* Footnotes

**Operating Temperature** Specification applicable to non-terminated bulk fiber cable